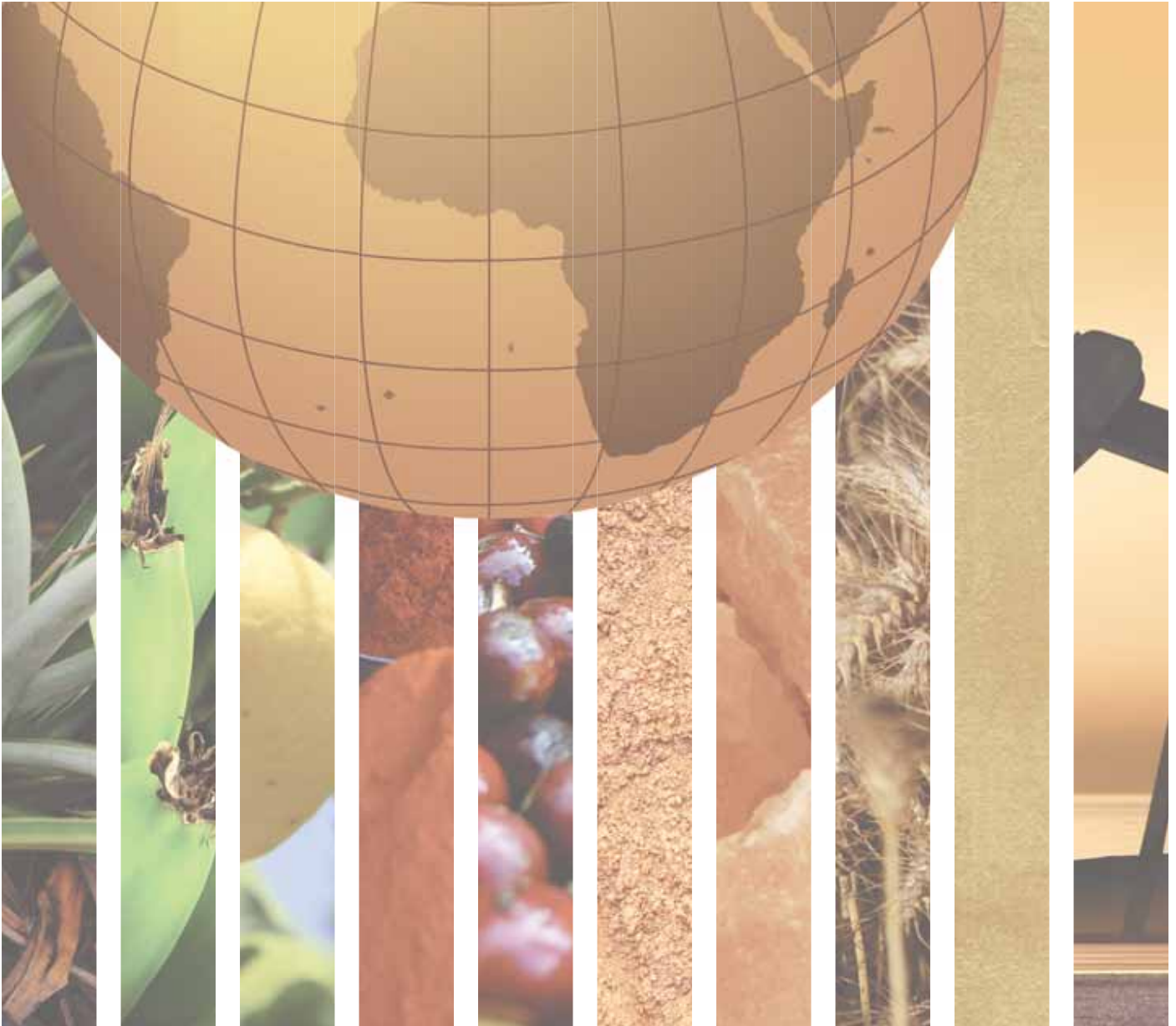


WESTERN AFRICA





BENIN		BURKINA FASO	
GENERAL INFORMATION		GENERAL INFORMATION	
Total area (square kilometres), 2009	112,620	Total area (square kilometres), 2009	274,220
Agricultural area (as a percentage of total area), 2009	29	Agricultural area (as a percentage of total area), 2009	44
Population (1,000 inhabitants), 2010	8,850	Population (1,000 inhabitants), 2010	16,469
Labour force (1,000 workers), 2010	3,614	Labour force (1,000 workers), 2010	7,505
Women in labour force (as a percentage of total labour force), 2010	42	Women in labour force (as a percentage of total labour force), 2010	47
Labour force in agriculture (as a percentage of total labour force), 2010	44	Labour force in agriculture (as a percentage of total labour force), 2010	92
Women in agriculture (as a percentage of labour force in agriculture), 2010	41	Women in agriculture (as a percentage of labour force in agriculture), 2010	48
Gross Domestic Product (GDP) (in millions of US\$), 2010	6,594	Gross Domestic Product (GDP) (in millions of US\$), 2010	8,341
GDP by economic activity (as a percentage of GDP), 2009 (agriculture / industry / services)	35/14/51	GDP by economic activity (as a percentage of GDP), 2009 (agriculture / industry / services)	35/24/42
COMMODITY EXPORT DEPENDENCE		COMMODITY EXPORT DEPENDENCE	
Commodity exports (in millions of US\$ and as a percentage of merchandise exports), 2009-2010	1,185 (91%)	Commodity exports (in millions of US\$ and as a percentage of merchandise exports), 2009-2010	1,023 (94%)
Commodity exports (as a percentage of GDP), 2009-2010	18	Commodity exports (as a percentage of GDP), 2009-2010	12
Exports by commodity groups (as a percentage of total commodity exports), 2009-2010		Exports by commodity groups (as a percentage of total commodity exports), 2009-2010	
All food items	24	All food items	20
Agricultural raw materials	45	Agricultural raw materials	45
Fuels	19	Fuels	–
Ores, metals, precious stones and non-monetary gold	12	Ores, metals, precious stones and non-monetary gold	35
Three leading commodity exports (as a percentage of commodity exports), 2009-2010	63	Three leading commodity exports (as a percentage of commodity exports), 2009-2010	88
(263) Cotton	38	(263) Cotton	44
(334) Petroleum oils or bituminous minerals > 70 % oil	17	(971) Gold, non-monetary (excluding gold ores and concentrates)	35
(057) Fruits and nuts (excluding oil nuts), fresh or dried	8	(222) Oil seeds and oleaginous fruits (excluding flour)	9
Leading destination markets for commodity exports (as a percentage of commodity exports), 2009-2010	73	Leading destination markets for commodity exports (as a percentage of commodity exports), 2009-2010	70
China, India, EU (27), Mali, Nigeria	25/16/15/12/5	Switzerland, EU (27), China, Singapore, Thailand	24/17/13/12/4
Export concentration ratio	(2000) 0.5723 (2010) 0.3691	Export concentration ratio	(2000) 0.5451 (2010) 0.5013
Membership in international commodity bodies	INBAR	Membership in international commodity bodies	ICAC
FOOD SECURITY		FOOD SECURITY	
Commodity import value (in millions of US\$ and as a percentage of merchandise import value), 2009-2010	1,204 (57%)	Commodity import value (in millions of US\$ and as a percentage of merchandise import value), 2009-2010	758 (39%)
Net food imports (in millions of US\$), 2010	394	Net food imports (in millions of US\$), 2010	113
MDG 1.1: Percentage of population below 1US\$ (PPP) per day, 1990/92 and 2007/09	n.a. - 47	MDG 1.1: Percentage of population below 1US\$ (PPP) per day, 1990/92 and 2007/09	71 - 57
MDG 1.9: Percentage of the population undernourished, 1991 and 2007	20 - 12	MDG 1.9: Percentage of the population undernourished, 1991 and 2007	14 - 8



CAPE VERDE		CÔTE D'IVOIRE	
GENERAL INFORMATION		GENERAL INFORMATION	
Total area (square kilometres), 2009	4,030	Total area (square kilometres), 2009	322,460
Agricultural area (as a percentage of total area), 2009	22	Agricultural area (as a percentage of total area), 2009	63
Population (1,000 inhabitants), 2010	496	Population (1,000 inhabitants), 2010	19,738
Labour force (1,000 workers), 2010	190	Labour force (1,000 workers), 2010	7,422
Women in labour force (as a percentage of total labour force), 2010	41	Women in labour force (as a percentage of total labour force), 2010	30
Labour force in agriculture (as a percentage of total labour force), 2010	17	Labour force in agriculture (as a percentage of total labour force), 2010	38
Women in agriculture (as a percentage of labour force in agriculture), 2010	41	Women in agriculture (as a percentage of labour force in agriculture), 2010	36
Gross Domestic Product (GDP) (in millions of US\$), 2010	1,643	Gross Domestic Product (GDP) (in millions of US\$), 2010	22,769
GDP by economic activity (as a percentage of GDP), 2009 (agriculture / industry / services)	8/17/74	GDP by economic activity (as a percentage of GDP), 2009 (agriculture / industry / services)	26/28/45
COMMODITY EXPORT DEPENDENCE		COMMODITY EXPORT DEPENDENCE	
Commodity exports (in millions of US\$ and as a percentage of merchandise exports), 2009-2010	29 (70%)	Commodity exports (in millions of US\$ and as a percentage of merchandise exports), 2009-2010	8,507 (85%)
Commodity exports (as a percentage of GDP), 2009-2010	2	Commodity exports (as a percentage of GDP), 2009-2010	37
Exports by commodity groups (as a percentage of total commodity exports), 2009-2010		Exports by commodity groups (as a percentage of total commodity exports), 2009-2010	
All food items	98	All food items	53
Agricultural raw materials	–	Agricultural raw materials	9
Fuels	–	Fuels	36
Ores, metals, precious stones and non-monetary gold	1	Ores, metals, precious stones and non-monetary gold	2
Three leading commodity exports (as a percentage of commodity exports), 2009-2010	99	Three leading commodity exports (as a percentage of commodity exports), 2009-2010	71
(03) Fishery products	96	(072) Cocoa	39
(112) Alcoholic beverages	2	(334) Petroleum oils or bituminous minerals > 70 % oil	17
(282) Ferrous waste, scrape; remelting ingots, iron, steel	1	(333) Petroleum oils, oils from bitumin. materials, crude	15
Leading destination markets for commodity exports (as a percentage of commodity exports), 2009-2010	97	Leading destination markets for commodity exports (as a percentage of commodity exports), 2009-2010	72
EU (27), United States, Brazil	94/1/1	EU (27), United States, Nigeria, Ghana, Canada	46/11/7/5/3
Export concentration ratio	(2000) 0.4747 (2010) 0.4426	Export concentration ratio	(2000) 0.3171 (2010) 0.3538
Membership in international commodity bodies	–	Membership in international commodity bodies	ICCO, ICO, IGC, IRSG, ICAC, ISO, ITTO
FOOD SECURITY		FOOD SECURITY	
Commodity import value (in millions of US\$ and as a percentage of merchandise import value), 2009-2010	298 (43%)	Commodity import value (in millions of US\$ and as a percentage of merchandise import value), 2009-2010	3,620 (52%)
Net food imports (in millions of US\$), 2010	162	Net food imports (in millions of US\$), 2010	- 2,451
MDG 1.1: Percentage of population below 1US\$ (PPP) per day, 1990/92 and 2007/09	n.a. - 21	MDG 1.1: Percentage of population below 1US\$ (PPP) per day, 1990/92 and 2007/09	18 - 24
MDG 1.9: Percentage of the population undernourished, 1991 and 2007	12 - 11	MDG 1.9: Percentage of the population undernourished, 1991 and 2007	15 - 14



GAMBIA		GHANA	
GENERAL INFORMATION		GENERAL INFORMATION	
Total area (square kilometres), 2009	11,300	Total area (square kilometres), 2009	238,540
Agricultural area (as a percentage of total area), 2009	59	Agricultural area (as a percentage of total area), 2009	65
Population (1,000 inhabitants), 2010	1,728	Population (1,000 inhabitants), 2010	24,392
Labour force (1,000 workers), 2010	796	Labour force (1,000 workers), 2010	11,143
Women in labour force (as a percentage of total labour force), 2010	47	Women in labour force (as a percentage of total labour force), 2010	49
Labour force in agriculture (as a percentage of total labour force), 2010	76	Labour force in agriculture (as a percentage of total labour force), 2010	55
Women in agriculture (as a percentage of labour force in agriculture), 2010	54	Women in agriculture (as a percentage of labour force in agriculture), 2010	44
Gross Domestic Product (GDP) (in millions of US\$), 2010	977	Gross Domestic Product (GDP) (in millions of US\$), 2010	17,814
GDP by economic activity (as a percentage of GDP), 2009 (agriculture / industry / services)	28/17/56	GDP by economic activity (as a percentage of GDP), 2009 (agriculture / industry / services)	36/28/37
COMMODITY EXPORT DEPENDENCE		COMMODITY EXPORT DEPENDENCE	
Commodity exports (in millions of US\$ and as a percentage of merchandise exports), 2009-2010	12 (82%)	Commodity exports (in millions of US\$ and as a percentage of merchandise exports), 2009-2010	6,209 (90%)
Commodity exports (as a percentage of GDP), 2009-2010	1	Commodity exports (as a percentage of GDP), 2009-2010	38
Exports by commodity groups (as a percentage of total commodity exports), 2009-2010		Exports by commodity groups (as a percentage of total commodity exports), 2009-2010	
All food items	78	All food items	61
Agricultural raw materials	3	Agricultural raw materials	8
Fuels	–	Fuels	3
Ores, metals, precious stones and non-monetary gold	19	Ores, metals, precious stones and non-monetary gold	28
Three leading commodity exports (as a percentage of commodity exports), 2009-2010	63	Three leading commodity exports (as a percentage of commodity exports), 2009-2010	73
(057) Fruits and nuts (excluding oil nuts), fresh or dried	42	(072) Cocoa	49
(421) Fixed vegetable fats & oils, crude, refined, fractio.	13	(971) Gold, non-monetary (excluding gold ores and concentrates)	14
(03) Fishery products	8	(287) Ores and concentrates of base metals, n.e.s.	10
Leading destination markets for commodity exports (as a percentage of commodity exports), 2009-2010	86	Leading destination markets for commodity exports (as a percentage of commodity exports), 2009-2010	73
India, EU (27), China, Senegal, Guinea	41/26/10/5/4	EU (27), South Africa, Ukraine, United States, India	43/12/9/5/4
Export concentration ratio	(2000) 0.3586 (2010) 0.3308	Export concentration ratio	(2000) 0.3117 (2010) 0.4243
Membership in international commodity bodies	–	Membership in international commodity bodies	INBAR, ICCO, ICO, ISO, ITTO
FOOD SECURITY		FOOD SECURITY	
Commodity import value (in millions of US\$ and as a percentage of merchandise import value), 2009-2010	131 (46%)	Commodity import value (in millions of US\$ and as a percentage of merchandise import value), 2009-2010	3,275 (35%)
Net food imports (in millions of US\$), 2010	82	Net food imports (in millions of US\$), 2010	- 3,152
MDG 1.1: Percentage of population below 1US\$ (PPP) per day, 1990/92 and 2007/09	67 - 34	MDG 1.1: Percentage of population below 1US\$ (PPP) per day, 1990/92 and 2007/09	51 - 30
MDG 1.9: Percentage of the population undernourished, 1991 and 2007	14 - 19	MDG 1.9: Percentage of the population undernourished, 1991 and 2007	28 - 5



GUINEA		GUINEA-BISSAU	
GENERAL INFORMATION		GENERAL INFORMATION	
Total area (square kilometres), 2009	245,860	Total area (square kilometres), 2009	36,130
Agricultural area (as a percentage of total area), 2009	58	Agricultural area (as a percentage of total area), 2009	45
Population (1,000 inhabitants), 2010	9,982	Population (1,000 inhabitants), 2010	1,515
Labour force (1,000 workers), 2010	4,803	Labour force (1,000 workers), 2010	564
Women in labour force (as a percentage of total labour force), 2010	47	Women in labour force (as a percentage of total labour force), 2010	38
Labour force in agriculture (as a percentage of total labour force), 2010	80	Labour force in agriculture (as a percentage of total labour force), 2010	79
Women in agriculture (as a percentage of labour force in agriculture), 2010	50	Women in agriculture (as a percentage of labour force in agriculture), 2010	45
Gross Domestic Product (GDP) (in millions of US\$), 2010	4,737	Gross Domestic Product (GDP) (in millions of US\$), 2010	835
GDP by economic activity (as a percentage of GDP), 2009 (agriculture / industry / services)	25/41/34	GDP by economic activity (as a percentage of GDP), 2009 (agriculture / industry / services)	45/14/42
COMMODITY EXPORT DEPENDENCE		COMMODITY EXPORT DEPENDENCE	
Commodity exports (in millions of US\$ and as a percentage of merchandise exports), 2009-2010	1,131 (85%)	Commodity exports (in millions of US\$ and as a percentage of merchandise exports), 2009-2010	119 (99%)
Commodity exports (as a percentage of GDP), 2009-2010	24	Commodity exports (as a percentage of GDP), 2009-2010	14
Exports by commodity groups (as a percentage of total commodity exports), 2009-2010		Exports by commodity groups (as a percentage of total commodity exports), 2009-2010	
All food items	9	All food items	92
Agricultural raw materials	4	Agricultural raw materials	1
Fuels	18	Fuels	6
Ores, metals, precious stones and non-monetary gold	70	Ores, metals, precious stones and non-monetary gold	1
Three leading commodity exports (as a percentage of commodity exports), 2009-2010	78	Three leading commodity exports (as a percentage of commodity exports), 2009-2010	98
(285) Aluminium ores and concentrates (incl. alumina)	51	(057) Fruits and nuts (excluding oil nuts), fresh or dried	91
(333) Petroleum oils, oils from bitumin. materials, crude	17	(333) Petroleum oils, oils from bitumin. materials, crude	6
(971) Gold, non-monetary (excluding gold ores and concentrates)	10	(282) Ferrous waste, scrape; remelting ingots, iron, steel	1
Leading destination markets for commodity exports (as a percentage of commodity exports), 2009-2010	84	Leading destination markets for commodity exports (as a percentage of commodity exports), 2009-2010	98
EU (27), India, Russian Federation, United States, Ukraine	40/19/12/8/5	India, United States, Singapore, EU (27)	89/6/2/1
Export concentration ratio	(2000) 0.5678 (2010) 0.5060	Export concentration ratio	(2000) 0.5855 (2010) 0.8864
Membership in international commodity bodies	–	Membership in international commodity bodies	–
FOOD SECURITY		FOOD SECURITY	
Commodity import value (in millions of US\$ and as a percentage of merchandise import value), 2009-2010	497 (40%)	Commodity import value (in millions of US\$ and as a percentage of merchandise import value), 2009-2010	126 (60%)
Net food imports (in millions of US\$), 2010	181	Net food imports (in millions of US\$), 2010	- 30
MDG 1.1: Percentage of population below 1US\$ (PPP) per day, 1990/92 and 2007/09	93 - 43	MDG 1.1: Percentage of population below 1US\$ (PPP) per day, 1990/92 and 2007/09	41 - 49
MDG 1.9: Percentage of the population undernourished, 1991 and 2007	20 - 16	MDG 1.9: Percentage of the population undernourished, 1991 and 2007	22 - 22



LIBERIA		MALI	
GENERAL INFORMATION		GENERAL INFORMATION	
Total area (square kilometres), 2009	111,370	Total area (square kilometres), 2009	1,240,190
Agricultural area (as a percentage of total area), 2009	23	Agricultural area (as a percentage of total area), 2009	33
Population (1,000 inhabitants), 2010	3,994	Population (1,000 inhabitants), 2010	15,370
Labour force (1,000 workers), 2010	1,472	Labour force (1,000 workers), 2010	4,069
Women in labour force (as a percentage of total labour force), 2010	40	Women in labour force (as a percentage of total labour force), 2010	38
Labour force in agriculture (as a percentage of total labour force), 2010	62	Labour force in agriculture (as a percentage of total labour force), 2010	75
Women in agriculture (as a percentage of labour force in agriculture), 2010	44	Women in agriculture (as a percentage of labour force in agriculture), 2010	37
Gross Domestic Product (GDP) (in millions of US\$), 2010	949	Gross Domestic Product (GDP) (in millions of US\$), 2010	9,121
GDP by economic activity (as a percentage of GDP), 2009 (agriculture / industry / services)	64/13/24	GDP by economic activity (as a percentage of GDP), 2009 (agriculture / industry / services)	39/20/40
COMMODITY EXPORT DEPENDENCE		COMMODITY EXPORT DEPENDENCE	
Commodity exports (in millions of US\$ and as a percentage of merchandise exports), 2009-2010	107 (62%)	Commodity exports (in millions of US\$ and as a percentage of merchandise exports), 2009-2010	1,628 (88%)
Commodity exports (as a percentage of GDP), 2009-2010	12	Commodity exports (as a percentage of GDP), 2009-2010	18
Exports by commodity groups (as a percentage of total commodity exports), 2009-2010		Exports by commodity groups (as a percentage of total commodity exports), 2009-2010	
All food items	3	All food items	9
Agricultural raw materials	56	Agricultural raw materials	30
Fuels	19	Fuels	1
Ores, metals, precious stones and non-monetary gold	22	Ores, metals, precious stones and non-monetary gold	60
Three leading commodity exports (as a percentage of commodity exports), 2009-2010	77	Three leading commodity exports (as a percentage of commodity exports), 2009-2010	93
(231) Natural rubber & similar gums, in primary forms	54	(971) Gold, non-monetary (excluding gold ores and concentrates)	59
(971) Gold, non-monetary (excluding gold ores and concentrates)	13	(263) Cotton	30
(333) Petroleum oils, oils from bitumin. materials, crude	10	(001) Live animals other than animals of division 03	4
Leading destination markets for commodity exports (as a percentage of commodity exports), 2009-2010	85	Leading destination markets for commodity exports (as a percentage of commodity exports), 2009-2010	79
United States, EU (27), United Arab Emirates, South Africa, Canada	35/19/12/10/9	South Africa, China, EU (27), Thailand, Senegal	55/9/6/5/4
Export concentration ratio	(2000) 0.5651 (2010) 0.4714	Export concentration ratio	(2000) 0.6243 (2010) 0.5835
Membership in international commodity bodies	ICO, ITTO	Membership in international commodity bodies	ICAC
FOOD SECURITY		FOOD SECURITY	
Commodity import value (in millions of US\$ and as a percentage of merchandise import value), 2009-2010	34 (7%)	Commodity import value (in millions of US\$ and as a percentage of merchandise import value), 2009-2010	928 (36%)
Net food imports (in millions of US\$), 2010	7	Net food imports (in millions of US\$), 2010	226
MDG 1.1: Percentage of population below 1US\$ (PPP) per day, 1990/92 and 2007/09	n.a. - 84	MDG 1.1: Percentage of population below 1US\$ (PPP) per day, 1990/92 and 2007/09	86 - 51
MDG 1.9: Percentage of the population undernourished, 1991 and 2007	30 - 32	MDG 1.9: Percentage of the population undernourished, 1991 and 2007	27 - 12



MAURITANIA		NIGER	
GENERAL INFORMATION		GENERAL INFORMATION	
Total area (square kilometres), 2009	1,030,700	Total area (square kilometres), 2009	1,267,000
Agricultural area (as a percentage of total area), 2009	38	Agricultural area (as a percentage of total area), 2009	35
Population (1,000 inhabitants), 2010	3,460	Population (1,000 inhabitants), 2010	15,512
Labour force (1,000 workers), 2010	1,480	Labour force (1,000 workers), 2010	5,111
Women in labour force (as a percentage of total labour force), 2010	44	Women in labour force (as a percentage of total labour force), 2010	31
Labour force in agriculture (as a percentage of total labour force), 2010	50	Labour force in agriculture (as a percentage of total labour force), 2010	83
Women in agriculture (as a percentage of labour force in agriculture), 2010	54	Women in agriculture (as a percentage of labour force in agriculture), 2010	36
Gross Domestic Product (GDP) (in millions of US\$), 2010	3,572	Gross Domestic Product (GDP) (in millions of US\$), 2010	5,550
GDP by economic activity (as a percentage of GDP), 2009 (agriculture / industry / services)	18/38/44	GDP by economic activity (as a percentage of GDP), 2009 (agriculture / industry / services)	44/16/40
COMMODITY EXPORT DEPENDENCE		COMMODITY EXPORT DEPENDENCE	
Commodity exports (in millions of US\$ and as a percentage of merchandise exports), 2009-2010	1,606 (100%)	Commodity exports (in millions of US\$ and as a percentage of merchandise exports), 2009-2010	692 (68%)
Commodity exports (as a percentage of GDP), 2009-2010	50	Commodity exports (as a percentage of GDP), 2009-2010	13
Exports by commodity groups (as a percentage of total commodity exports), 2009-2010		Exports by commodity groups (as a percentage of total commodity exports), 2009-2010	
All food items	28	All food items	42
Agricultural raw materials	–	Agricultural raw materials	6
Fuels	13	Fuels	18
Ores, metals, precious stones and non-monetary gold	59	Ores, metals, precious stones and non-monetary gold	33
Three leading commodity exports (as a percentage of commodity exports), 2009-2010	84	Three leading commodity exports (as a percentage of commodity exports), 2009-2010	65
(281) Iron ore and concentrates	45	(286) Ores and concentrates of uranium or thorium	28
(03) Fishery products	26	(001) Live animals other than animals of division 03	26
(333) Petroleum oils, oils from bitumin. materials, crude	13	(334) Petroleum oils or bituminous minerals > 70 % oil	11
Leading destination markets for commodity exports (as a percentage of commodity exports), 2009-2010	90	Leading destination markets for commodity exports (as a percentage of commodity exports), 2009-2010	88
China, EU (27), Japan, Côte d'Ivoire, Cameroon	41/34/6/6/3	Nigeria, United States, EU (27), Japan, Ghana	33/23/22/6/4
Export concentration ratio	(2000) 0.4858 (2010) 0.4888	Export concentration ratio	(2000) 0.4967 (2010) 0.2922
Membership in international commodity bodies	–	Membership in international commodity bodies	–
FOOD SECURITY		FOOD SECURITY	
Commodity import value (in millions of US\$ and as a percentage of merchandise import value), 2009-2010	659 (44%)	Commodity import value (in millions of US\$ and as a percentage of merchandise import value), 2009-2010	831 (36%)
Net food imports (in millions of US\$), 2010	35	Net food imports (in millions of US\$), 2010	63
MDG 1.1: Percentage of population below 1US\$ (PPP) per day, 1990/92 and 2007/09	n.a.	MDG 1.1: Percentage of population below 1US\$ (PPP) per day, 1990/92 and 2007/09	73 - 43
MDG 1.9: Percentage of the population undernourished, 1991 and 2007	12 - 8	MDG 1.9: Percentage of the population undernourished, 1991 and 2007	37 - 16



NIGERIA		SAINT HELENA	
GENERAL INFORMATION		GENERAL INFORMATION	
Total area (square kilometres), 2009	923,770	Total area (square kilometres), 2009	390
Agricultural area (as a percentage of total area), 2009	81	Agricultural area (as a percentage of total area), 2009	31
Population (1,000 inhabitants), 2010	158,423	Population (1,000 inhabitants), 2010	4
Labour force (1,000 workers), 2010	49,319	Labour force (1,000 workers), 2010	1
Women in labour force (as a percentage of total labour force), 2010	36	Women in labour force (as a percentage of total labour force), 2010	100
Labour force in agriculture (as a percentage of total labour force), 2010	25	Labour force in agriculture (as a percentage of total labour force), 2010	100
Women in agriculture (as a percentage of labour force in agriculture), 2010	39	Women in agriculture (as a percentage of labour force in agriculture), 2010	–
Gross Domestic Product (GDP) (in millions of US\$), 2010	222,070	Gross Domestic Product (GDP) (in millions of US\$), 2010	n.a.
GDP by economic activity (as a percentage of GDP), 2009 (agriculture / industry / services)	37/34/29	GDP by economic activity (as a percentage of GDP), 2009 (agriculture / industry / services)	n.a.
COMMODITY EXPORT DEPENDENCE		COMMODITY EXPORT DEPENDENCE	
Commodity exports (in millions of US\$ and as a percentage of merchandise exports), 2009-2010	57,956 (97%)	Commodity exports (in millions of US\$ and as a percentage of merchandise exports), 2009-2010	18 (68%)
Commodity exports (as a percentage of GDP), 2009-2010	29	Commodity exports (as a percentage of GDP), 2009-2010	n.a.
Exports by commodity groups (as a percentage of total commodity exports), 2009-2010		Exports by commodity groups (as a percentage of total commodity exports), 2009-2010	
All food items	3	All food items	78
Agricultural raw materials	1	Agricultural raw materials	–
Fuels	95	Fuels	21
Ores, metals, precious stones and non-monetary gold	1	Ores, metals, precious stones and non-monetary gold	1
Three leading commodity exports (as a percentage of commodity exports), 2009-2010	94	Three leading commodity exports (as a percentage of commodity exports), 2009-2010	97
(333) Petroleum oils, oils from bitumin. materials, crude	83	(03) Fishery products	75
(334) Petroleum oils or bituminous minerals > 70 % oil	6	(321) Coal, whether or not pulverized, not agglomerated	21
(343) Natural gas, whether or not liquefied	5	(073) Chocolate, food preparations with cocoa, n.e.s.	1
Leading destination markets for commodity exports (as a percentage of commodity exports), 2009-2010	81	Leading destination markets for commodity exports (as a percentage of commodity exports), 2009-2010	98
United States, EU (27), India, Brazil, South Africa	36/24/10/8/3	United States, Japan, EU (27), Indonesia	44/29/24/1
Export concentration ratio	(2000) 0.9276 (2010) 0.7607	Export concentration ratio	(2000) 0.3041 (2010) 0.4021
Membership in international commodity bodies	INBAR, ICCO, IRSG, ICAC, ISO, ITTO	Membership in international commodity bodies	–
FOOD SECURITY		FOOD SECURITY	
Commodity import value (in millions of US\$ and as a percentage of merchandise import value), 2009-2010	8,993 (23%)	Commodity import value (in millions of US\$ and as a percentage of merchandise import value), 2009-2010	30 (53%)
Net food imports (in millions of US\$), 2010	4,353	Net food imports (in millions of US\$), 2010	- 6
MDG 1.1: Percentage of population below 1US\$ (PPP) per day, 1990/92 and 2007/09	49 - 64	MDG 1.1: Percentage of population below 1US\$ (PPP) per day, 1990/92 and 2007/09	n.a.
MDG 1.9: Percentage of the population undernourished, 1991 and 2007	16 - 6	MDG 1.9: Percentage of the population undernourished, 1991 and 2007	n.a.



SENEGAL		SIERRA LEONE	
GENERAL INFORMATION		GENERAL INFORMATION	
Total area (square kilometres), 2009	196,720	Total area (square kilometres), 2009	71,740
Agricultural area (as a percentage of total area), 2009	48	Agricultural area (as a percentage of total area), 2009	48
Population (1,000 inhabitants), 2010	12,434	Population (1,000 inhabitants), 2010	5,868
Labour force (1,000 workers), 2010	5,440	Labour force (1,000 workers), 2010	2,209
Women in labour force (as a percentage of total labour force), 2010	43	Women in labour force (as a percentage of total labour force), 2010	51
Labour force in agriculture (as a percentage of total labour force), 2010	70	Labour force in agriculture (as a percentage of total labour force), 2010	60
Women in agriculture (as a percentage of labour force in agriculture), 2010	47	Women in agriculture (as a percentage of labour force in agriculture), 2010	62
Gross Domestic Product (GDP) (in millions of US\$), 2010	12,834	Gross Domestic Product (GDP) (in millions of US\$), 2010	2,273
GDP by economic activity (as a percentage of GDP), 2009 (agriculture / industry / services)	19/21/60	GDP by economic activity (as a percentage of GDP), 2009 (agriculture / industry / services)	58/5/37
COMMODITY EXPORT DEPENDENCE		COMMODITY EXPORT DEPENDENCE	
Commodity exports (in millions of US\$ and as a percentage of merchandise exports), 2009-2010	1,379 (66%)	Commodity exports (in millions of US\$ and as a percentage of merchandise exports), 2009-2010	188 (69%)
Commodity exports (as a percentage of GDP), 2009-2010	11	Commodity exports (as a percentage of GDP), 2009-2010	8
Exports by commodity groups (as a percentage of total commodity exports), 2009-2010		Exports by commodity groups (as a percentage of total commodity exports), 2009-2010	
All food items	47	All food items	24
Agricultural raw materials	2	Agricultural raw materials	3
Fuels	38	Fuels	1
Ores, metals, precious stones and non-monetary gold	13	Ores, metals, precious stones and non-monetary gold	72
Three leading commodity exports (as a percentage of commodity exports), 2009-2010	65	Three leading commodity exports (as a percentage of commodity exports), 2009-2010	66
(334) Petroleum oils or bituminous minerals > 70 % oil	37	(971) Pearls, precious & semi-precious stones	35
(03) Fishery products	21	(285) Aluminium ores and concentrates (incl. alumina)	18
(971) Gold, non-monetary (excluding gold ores and concentrates)	7	(287) Ores and concentrates of base metals, n.e.s.	13
Leading destination markets for commodity exports (as a percentage of commodity exports), 2009-2010	55	Leading destination markets for commodity exports (as a percentage of commodity exports), 2009-2010	92
EU (27), Mali, Côte d'Ivoire, Switzerland, China	26/19/4/3/3	EU (27), United States, China, India, Côte d'Ivoire	74/10/4/2/2
Export concentration ratio	(2000) 0.2255 (2010) 0.2425	Export concentration ratio	(2000) 0.5318 (2010) 0.2696
Membership in international commodity bodies	INBAR	Membership in international commodity bodies	INBAR, ICCO, ICO
FOOD SECURITY		FOOD SECURITY	
Commodity import value (in millions of US\$ and as a percentage of merchandise import value), 2009-2010	2,465 (52%)	Commodity import value (in millions of US\$ and as a percentage of merchandise import value), 2009-2010	461 (71%)
Net food imports (in millions of US\$), 2010	386	Net food imports (in millions of US\$), 2010	127
MDG 1.1: Percentage of population below 1US\$ (PPP) per day, 1990/92 and 2007/09	66 - 34	MDG 1.1: Percentage of population below 1US\$ (PPP) per day, 1990/92 and 2007/09	63 - 53
MDG 1.9: Percentage of the population undernourished, 1991 and 2007	22 - 19	MDG 1.9: Percentage of the population undernourished, 1991 and 2007	45 - 35


TOGO
GENERAL INFORMATION

Total area (square kilometres), 2009	56,790
Agricultural area (as a percentage of total area), 2009	60
Population (1,000 inhabitants), 2010	6,028
Labour force (1,000 workers), 2010	2,412
Women in labour force (as a percentage of total labour force), 2010	38
Labour force in agriculture (as a percentage of total labour force), 2010	53
Women in agriculture (as a percentage of labour force in agriculture), 2010	41
Gross Domestic Product (GDP) (in millions of US\$), 2010	3,205
GDP by economic activity (as a percentage of GDP), 2009 (agriculture / industry / services)	47/19/34

COMMODITY EXPORT DEPENDENCE

Commodity exports (in millions of US\$ and as a percentage of merchandise exports), 2009-2010	545 (61%)
Commodity exports (as a percentage of GDP), 2009-2010	17
Exports by commodity groups (as a percentage of total commodity exports), 2009-2010	
All food items	40
Agricultural raw materials	14
Fuels	20
Ores, metals, precious stones and non-monetary gold	25
Three leading commodity exports (as a percentage of commodity exports), 2009-2010	55
(072) Cocoa	19
(272) Crude fertilizers (excluding those of division 56)	18
(334) Petroleum oils or bituminous minerals > 70 % oil	18
Leading destination markets for commodity exports (as a percentage of commodity exports), 2009-2010	62
EU (27), India, Mali, Burkina Faso, Benin	25/14/10/7/6
Export concentration ratio	(2000) 0.2848 (2010) 0.2047
Membership in international commodity bodies	INBAR, ICCO, ICO, ICAC, ITTO

FOOD SECURITY

Commodity import value (in millions of US\$ and as a percentage of merchandise import value), 2009-2010	681 (45%)
Net food imports (in millions of US\$), 2010	- 11
MDG 1.1: Percentage of population below 1US\$ (PPP) per day, 1990/92 and 2007/09	n.a. - 39
MDG 1.9: Percentage of the population undernourished, 1991 and 2007	43 - 30