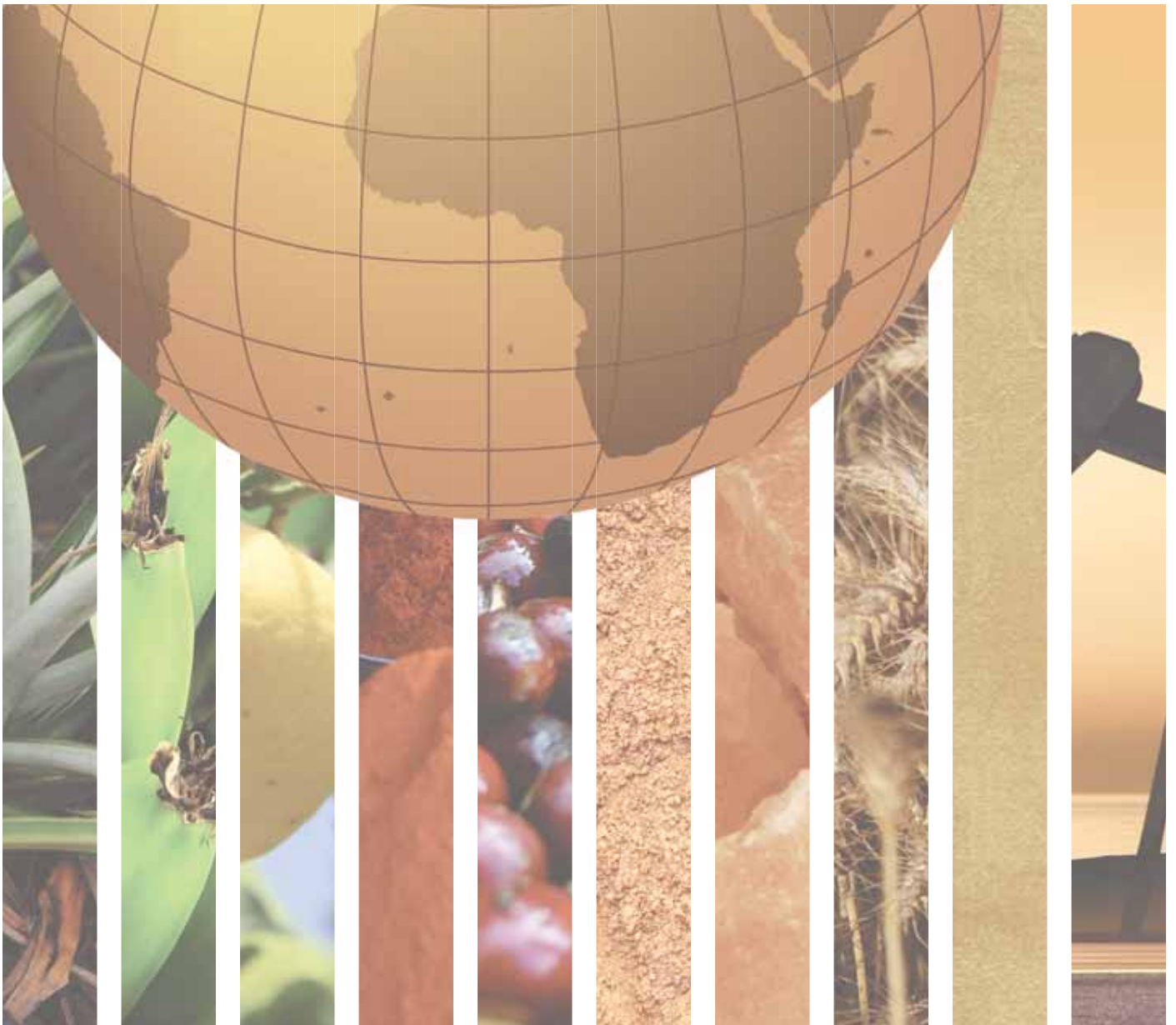


SOUTH AMERICA





ARGENTINA		BOLIVIA (PLURINATIONAL STATE OF)	
GENERAL INFORMATION		GENERAL INFORMATION	
Total area (square kilometres), 2009	2,780,400	Total area (square kilometres), 2009	1,098,580
Agricultural area (as a percentage of total area), 2009	51	Agricultural area (as a percentage of total area), 2009	34
Population (1,000 inhabitants), 2010	40,412	Population (1,000 inhabitants), 2010	9,930
Labour force (1,000 workers), 2010	18,966	Labour force (1,000 workers), 2010	4,800
Women in labour force (as a percentage of total labour force), 2010	42	Women in labour force (as a percentage of total labour force), 2010	46
Labour force in agriculture (as a percentage of total labour force), 2010	7	Labour force in agriculture (as a percentage of total labour force), 2010	41
Women in agriculture (as a percentage of labour force in agriculture), 2010	11	Women in agriculture (as a percentage of labour force in agriculture), 2010	42
Gross Domestic Product (GDP) (in millions of US\$), 2010	370,470	Gross Domestic Product (GDP) (in millions of US\$), 2010	19,208
GDP by economic activity (as a percentage of GDP), 2009 (agriculture / industry / services)	8/32/61	GDP by economic activity (as a percentage of GDP), 2009 (agriculture / industry / services)	13/35/52
COMMODITY EXPORT DEPENDENCE		COMMODITY EXPORT DEPENDENCE	
Commodity exports (in millions of US\$ and as a percentage of merchandise exports), 2009-2010	40,966 (67%)	Commodity exports (in millions of US\$ and as a percentage of merchandise exports), 2009-2010	5,289 (93%)
Commodity exports (as a percentage of GDP), 2009-2010	12	Commodity exports (as a percentage of GDP), 2009-2010	29
Exports by commodity groups (as a percentage of total commodity exports), 2009-2010		Exports by commodity groups (as a percentage of total commodity exports), 2009-2010	
All food items	76	All food items	19
Agricultural raw materials	2	Agricultural raw materials	2
Fuels	15	Fuels	49
Ores, metals, precious stones and non-monetary gold	8	Ores, metals, precious stones and non-monetary gold	30
Three leading commodity exports (as a percentage of commodity exports), 2009-2010	41	Three leading commodity exports (as a percentage of commodity exports), 2009-2010	71
(081) Feeding stuff for animals (no unmilled cereals)	21	(343) Natural gas, whether or not liquefied	42
(421) Fixed vegetable fats & oils, crude, refined, fractio.	12	(287) Ores and concentrates of base metals, n.e.s.	18
(222) Oil seeds and oleaginous fruits (excluding flour)	8	(289) Ores & concentrates of precious metals; waste, scrap	11
Leading destination markets for commodity exports (as a percentage of commodity exports), 2009-2010	59	Leading destination markets for commodity exports (as a percentage of commodity exports), 2009-2010	67
EU (27), China, Brazil, Chile, United States	22/12/12/7/6	Brazil, EU (27), Argentina, Republic of Korea, United States	35/9/8/8/7
Export concentration ratio	(2000) 0.1370 (2010) 0.1458	Export concentration ratio	(2000) 0.1908 (2010) 0.4136
Membership in international commodity bodies	INBAR, IGC, ICAC, IOOC, ISO	Membership in international commodity bodies	ITTO
FOOD SECURITY		FOOD SECURITY	
Commodity import value (in millions of US\$ and as a percentage of merchandise import value), 2009-2010	6,777 (14%)	Commodity import value (in millions of US\$ and as a percentage of merchandise import value), 2009-2010	1,220 (25%)
Net food imports (in millions of US\$), 2010	- 32,334	Net food imports (in millions of US\$), 2010	- 420
MDG 1.1: Percentage of population below 1US\$ (PPP) per day, 1990/92 and 2007/09	0.1 - 0.9	MDG 1.1: Percentage of population below 1US\$ (PPP) per day, 1990/92 and 2007/09	4 - 14
MDG 1.9: Percentage of the population undernourished, 1991 and 2007	5 - 5	MDG 1.9: Percentage of the population undernourished, 1991 and 2007	29 - 27



BRAZIL		CHILE	
GENERAL INFORMATION		GENERAL INFORMATION	
Total area (square kilometres), 2009	8,514,880	Total area (square kilometres), 2009	756,100
Agricultural area (as a percentage of total area), 2009	31	Agricultural area (as a percentage of total area), 2009	21
Population (1,000 inhabitants), 2010	194,946	Population (1,000 inhabitants), 2010	17,114
Labour force (1,000 workers), 2010	100,776	Labour force (1,000 workers), 2010	7,293
Women in labour force (as a percentage of total labour force), 2010	44	Women in labour force (as a percentage of total labour force), 2010	37
Labour force in agriculture (as a percentage of total labour force), 2010	11	Labour force in agriculture (as a percentage of total labour force), 2010	13
Women in agriculture (as a percentage of labour force in agriculture), 2010	25	Women in agriculture (as a percentage of labour force in agriculture), 2010	14
Gross Domestic Product (GDP) (in millions of US\$), 2010	2,061,352	Gross Domestic Product (GDP) (in millions of US\$), 2010	206,258
GDP by economic activity (as a percentage of GDP), 2009 (agriculture / industry / services)	6/25/69	GDP by economic activity (as a percentage of GDP), 2009 (agriculture / industry / services)	3/42/55
COMMODITY EXPORT DEPENDENCE		COMMODITY EXPORT DEPENDENCE	
Commodity exports (in millions of US\$ and as a percentage of merchandise exports), 2009-2010	109,276 (63%)	Commodity exports (in millions of US\$ and as a percentage of merchandise exports), 2009-2010	54,756 (89%)
Commodity exports (as a percentage of GDP), 2009-2010	6	Commodity exports (as a percentage of GDP), 2009-2010	30
Exports by commodity groups (as a percentage of total commodity exports), 2009-2010		Exports by commodity groups (as a percentage of total commodity exports), 2009-2010	
All food items	52	All food items	21
Agricultural raw materials	6	Agricultural raw materials	7
Fuels	15	Fuels	1
Ores, metals, precious stones and non-monetary gold	27	Ores, metals, precious stones and non-monetary gold	71
Three leading commodity exports (as a percentage of commodity exports), 2009-2010	41	Three leading commodity exports (as a percentage of commodity exports), 2009-2010	68
(281) Iron ore and concentrates	19	(682) Copper	41
(333) Petroleum oils, oils from bitumin. materials, crude	12	(283) Copper ores and concentrates; copper mattes, cemen	21
(222) Oil seeds and oleaginous fruits (excluding flour)	10	(03) Fishery products	6
Leading destination markets for commodity exports (as a percentage of commodity exports), 2009-2010	59	Leading destination markets for commodity exports (as a percentage of commodity exports), 2009-2010	75
EU (27), China, United States, Japan, Russian Federation	24/21/7/4/3	China, EU (27), Japan, United States, Republic of Korea	28/19/11/11/6
Export concentration ratio	(2000) 0.0881 (2010) 0.1526	Export concentration ratio	(2000) 0.2886 (2010) 0.3976
Membership in international commodity bodies	ICCO, ICO, ILZSG, INSG, ICAC, ISO, ITTO	Membership in international commodity bodies	INBAR, ICSG
FOOD SECURITY		FOOD SECURITY	
Commodity import value (in millions of US\$ and as a percentage of merchandise import value), 2009-2010	38,789 (25%)	Commodity import value (in millions of US\$ and as a percentage of merchandise import value), 2009-2010	16,454 (34%)
Net food imports (in millions of US\$), 2010	- 52,405	Net food imports (in millions of US\$), 2010	- 6,802
MDG 1.1: Percentage of population below 1US\$ (PPP) per day, 1990/92 and 2007/09	14 - 4	MDG 1.1: Percentage of population below 1US\$ (PPP) per day, 1990/92 and 2007/09	4 - 1
MDG 1.9: Percentage of the population undernourished, 1991 and 2007	11 - 6	MDG 1.9: Percentage of the population undernourished, 1991 and 2007	7 - 5



COLOMBIA		ECUADOR	
GENERAL INFORMATION		GENERAL INFORMATION	
Total area (square kilometres), 2009	1,141,750	Total area (square kilometres), 2009	256,370
Agricultural area (as a percentage of total area), 2009	37	Agricultural area (as a percentage of total area), 2009	29
Population (1,000 inhabitants), 2010	46,295	Population (1,000 inhabitants), 2010	14,465
Labour force (1,000 workers), 2010	23,923	Labour force (1,000 workers), 2010	6,637
Women in labour force (as a percentage of total labour force), 2010	47	Women in labour force (as a percentage of total labour force), 2010	41
Labour force in agriculture (as a percentage of total labour force), 2010	15	Labour force in agriculture (as a percentage of total labour force), 2010	19
Women in agriculture (as a percentage of labour force in agriculture), 2010	25	Women in agriculture (as a percentage of labour force in agriculture), 2010	25
Gross Domestic Product (GDP) (in millions of US\$), 2010	280,992	Gross Domestic Product (GDP) (in millions of US\$), 2010	65,142
GDP by economic activity (as a percentage of GDP), 2009 (agriculture / industry / services)	9/36/55	GDP by economic activity (as a percentage of GDP), 2009 (agriculture / industry / services)	7/38/55
COMMODITY EXPORT DEPENDENCE		COMMODITY EXPORT DEPENDENCE	
Commodity exports (in millions of US\$ and as a percentage of merchandise exports), 2009-2010	27,542 (76%)	Commodity exports (in millions of US\$ and as a percentage of merchandise exports), 2009-2010	14,185 (91%)
Commodity exports (as a percentage of GDP), 2009-2010	11	Commodity exports (as a percentage of GDP), 2009-2010	23
Exports by commodity groups (as a percentage of total commodity exports), 2009-2010		Exports by commodity groups (as a percentage of total commodity exports), 2009-2010	
All food items	17	All food items	36
Agricultural raw materials	4	Agricultural raw materials	5
Fuels	70	Fuels	58
Ores, metals, precious stones and non-monetary gold	9	Ores, metals, precious stones and non-monetary gold	1
Three leading commodity exports (as a percentage of commodity exports), 2009-2010	68	Three leading commodity exports (as a percentage of commodity exports), 2009-2010	78
(333) Petroleum oils, oils from bitumin. materials, crude	39	(333) Petroleum oils, oils from bitumin. materials, crude	52
(321) Coal, whether or not pulverized, not agglomerated	20	(057) Fruits and nuts (excluding oil nuts), fresh or dried	14
(334) Petroleum oils or bituminous minerals > 70 % oil	9	(03) Fishery products	12
Leading destination markets for commodity exports (as a percentage of commodity exports), 2009-2010	77	Leading destination markets for commodity exports (as a percentage of commodity exports), 2009-2010	79
United States, EU (27), China, Venezuela (Bolivarian Republic of), Switzerland	51/16/4/3/3	United States, EU (27), Panama, Peru, Chile	40/15/13/6/5
Export concentration ratio	(2000) 0.2946 (2010) 0.3413	Export concentration ratio	(2000) 0.4501 (2010) 0.4920
Membership in international commodity bodies	INBAR, ICO, ICAC, ISO, ITTO	Membership in international commodity bodies	INBAR, ICCO, ICO, ISO, ITTO
FOOD SECURITY		FOOD SECURITY	
Commodity import value (in millions of US\$ and as a percentage of merchandise import value), 2009-2010	6,499 (18%)	Commodity import value (in millions of US\$ and as a percentage of merchandise import value), 2009-2010	5,495 (31%)
Net food imports (in millions of US\$), 2010	- 513	Net food imports (in millions of US\$), 2010	- 3,510
MDG 1.1: Percentage of population below 1US\$ (PPP) per day, 1990/92 and 2007/09	8 - 16	MDG 1.1: Percentage of population below 1US\$ (PPP) per day, 1990/92 and 2007/09	16 - 5
MDG 1.9: Percentage of the population undernourished, 1991 and 2007	15 - 9	MDG 1.9: Percentage of the population undernourished, 1991 and 2007	23 - 15



FALKLAND ISLANDS		GUYANA	
GENERAL INFORMATION		GENERAL INFORMATION	
Total area (square kilometres), 2009	12,170	Total area (square kilometres), 2009	214,970
Agricultural area (as a percentage of total area), 2009	91	Agricultural area (as a percentage of total area), 2009	8
Population (1,000 inhabitants), 2010	3	Population (1,000 inhabitants), 2010	754
Labour force (1,000 workers), 2010	2	Labour force (1,000 workers), 2010	342
Women in labour force (as a percentage of total labour force), 2010	50	Women in labour force (as a percentage of total labour force), 2010	36
Labour force in agriculture (as a percentage of total labour force), 2010	–	Labour force in agriculture (as a percentage of total labour force), 2010	15
Women in agriculture (as a percentage of labour force in agriculture), 2010	–	Women in agriculture (as a percentage of labour force in agriculture), 2010	8
Gross Domestic Product (GDP) (in millions of US\$), 2010	n.a.	Gross Domestic Product (GDP) (in millions of US\$), 2010	2,234
GDP by economic activity (as a percentage of GDP), 2009 (agriculture / industry / services)	n.a.	GDP by economic activity (as a percentage of GDP), 2009 (agriculture / industry / services)	20/33/47
COMMODITY EXPORT DEPENDENCE		COMMODITY EXPORT DEPENDENCE	
Commodity exports (in millions of US\$ and as a percentage of merchandise exports), 2009-2010	136 (97%)	Commodity exports (in millions of US\$ and as a percentage of merchandise exports), 2009-2010	813 (94%)
Commodity exports (as a percentage of GDP), 2009-2010	n.a.	Commodity exports (as a percentage of GDP), 2009-2010	38
Exports by commodity groups (as a percentage of total commodity exports), 2009-2010		Exports by commodity groups (as a percentage of total commodity exports), 2009-2010	
All food items	94	All food items	45
Agricultural raw materials	6	Agricultural raw materials	5
Fuels	1	Fuels	–
Ores, metals, precious stones and non-monetary gold	–	Ores, metals, precious stones and non-monetary gold	50
Three leading commodity exports (as a percentage of commodity exports), 2009-2010	99	Three leading commodity exports (as a percentage of commodity exports), 2009-2010	64
(03) Fishery products	90	(971) Gold, non-monetary (excluding gold ores and concentrates)	32
(268) Wool and other animal hair (incl. wool tops)	6	(042) Rice	17
(012) Other meat and edible meat offal	3	(061) Sugar, molasses and honey	15
Leading destination markets for commodity exports (as a percentage of commodity exports), 2009-2010	90	Leading destination markets for commodity exports (as a percentage of commodity exports), 2009-2010	81
EU (27), Croatia, United States, South Africa, Ukraine	50/15/14/6/5	EU (27), Canada, United States, Jamaica, Ukraine	27/27/17/5/5
Export concentration ratio	(2000) 0.7059 (2010) 0.4823	Export concentration ratio	(2000) 0.3566 (2010) 0.3578
Membership in international commodity bodies	–	Membership in international commodity bodies	ISO, ITTO
FOOD SECURITY		FOOD SECURITY	
Commodity import value (in millions of US\$ and as a percentage of merchandise import value), 2009-2010	26 (34%)	Commodity import value (in millions of US\$ and as a percentage of merchandise import value), 2009-2010	486 (38%)
Net food imports (in millions of US\$), 2010	- 106	Net food imports (in millions of US\$), 2010	- 156
MDG 1.1: Percentage of population below 1US\$ (PPP) per day, 1990/92 and 2007/09	n.a.	MDG 1.1: Percentage of population below 1US\$ (PPP) per day, 1990/92 and 2007/09	6 - n.a.
MDG 1.9: Percentage of the population undernourished, 1991 and 2007	n.a.	MDG 1.9: Percentage of the population undernourished, 1991 and 2007	20 - 8



PARAGUAY		PERU	
GENERAL INFORMATION		GENERAL INFORMATION	
Total area (square kilometres), 2009	406,750	Total area (square kilometres), 2009	1,285,220
Agricultural area (as a percentage of total area), 2009	51	Agricultural area (as a percentage of total area), 2009	17
Population (1,000 inhabitants), 2010	6,455	Population (1,000 inhabitants), 2010	29,077
Labour force (1,000 workers), 2010	3,356	Labour force (1,000 workers), 2010	15,277
Women in labour force (as a percentage of total labour force), 2010	46	Women in labour force (as a percentage of total labour force), 2010	45
Labour force in agriculture (as a percentage of total labour force), 2010	25	Labour force in agriculture (as a percentage of total labour force), 2010	24
Women in agriculture (as a percentage of labour force in agriculture), 2010	8	Women in agriculture (as a percentage of labour force in agriculture), 2010	31
Gross Domestic Product (GDP) (in millions of US\$), 2010	18,460	Gross Domestic Product (GDP) (in millions of US\$), 2010	155,397
GDP by economic activity (as a percentage of GDP), 2009 (agriculture / industry / services)	24/22/54	GDP by economic activity (as a percentage of GDP), 2009 (agriculture / industry / services)	7/37/56
COMMODITY EXPORT DEPENDENCE		COMMODITY EXPORT DEPENDENCE	
Commodity exports (in millions of US\$ and as a percentage of merchandise exports), 2009-2010	3,439 (89%)	Commodity exports (in millions of US\$ and as a percentage of merchandise exports), 2009-2010	27,361 (89%)
Commodity exports (as a percentage of GDP), 2009-2010	21	Commodity exports (as a percentage of GDP), 2009-2010	19
Exports by commodity groups (as a percentage of total commodity exports), 2009-2010		Exports by commodity groups (as a percentage of total commodity exports), 2009-2010	
All food items	95	All food items	18
Agricultural raw materials	4	Agricultural raw materials	1
Fuels	–	Fuels	10
Ores, metals, precious stones and non-monetary gold	1	Ores, metals, precious stones and non-monetary gold	70
Three leading commodity exports (as a percentage of commodity exports), 2009-2010	69	Three leading commodity exports (as a percentage of commodity exports), 2009-2010	54
(222) Oil seeds and oleaginous fruits (excluding flour)	37	(971) Gold, non-monetary (excluding gold ores and concentrates)	26
(011) Meat of bovine animals, fresh, chilled or frozen	21	(283) Copper ores and concentrates; copper mattes, cemen	18
(081) Feeding stuff for animals (no unmilled cereals)	11	(287) Ores and concentrates of base metals, n.e.s.	10
Leading destination markets for commodity exports (as a percentage of commodity exports), 2009-2010	69	Leading destination markets for commodity exports (as a percentage of commodity exports), 2009-2010	75
Uruguay, Brazil, Chile, Argentina, EU (27)	22/14/13/11/9	EU (27), China, United States, Switzerland, Canada	18/17/16/14/10
Export concentration ratio	(2000) 0.3298 (2010) 0.3904	Export concentration ratio	(2000) 0.2262 (2010) 0.2783
Membership in international commodity bodies	ISO	Membership in international commodity bodies	INBAR, ICSG, ILZSG, ICAC, ITTO
FOOD SECURITY		FOOD SECURITY	
Commodity import value (in millions of US\$ and as a percentage of merchandise import value), 2009-2010	1,868 (22%)	Commodity import value (in millions of US\$ and as a percentage of merchandise import value), 2009-2010	7,126 (28%)
Net food imports (in millions of US\$), 2010	- 3,128	Net food imports (in millions of US\$), 2010	- 2,459
MDG 1.1: Percentage of population below 1US\$ (PPP) per day, 1990/92 and 2007/09	6 - 6	MDG 1.1: Percentage of population below 1US\$ (PPP) per day, 1990/92 and 2007/09	1 - 6
MDG 1.9: Percentage of the population undernourished, 1991 and 2007	16 - 10	MDG 1.9: Percentage of the population undernourished, 1991 and 2007	27 - 16



SURINAME		URUGUAY	
GENERAL INFORMATION		GENERAL INFORMATION	
Total area (square kilometres), 2009	163,820	Total area (square kilometres), 2009	176,220
Agricultural area (as a percentage of total area), 2009	–	Agricultural area (as a percentage of total area), 2009	84
Population (1,000 inhabitants), 2010	525	Population (1,000 inhabitants), 2010	3,369
Labour force (1,000 workers), 2010	195	Labour force (1,000 workers), 2010	1,652
Women in labour force (as a percentage of total labour force), 2010	37	Women in labour force (as a percentage of total labour force), 2010	44
Labour force in agriculture (as a percentage of total labour force), 2010	17	Labour force in agriculture (as a percentage of total labour force), 2010	11
Women in agriculture (as a percentage of labour force in agriculture), 2010	24	Women in agriculture (as a percentage of labour force in agriculture), 2010	14
Gross Domestic Product (GDP) (in millions of US\$), 2010	3,358	Gross Domestic Product (GDP) (in millions of US\$), 2010	40,496
GDP by economic activity (as a percentage of GDP), 2009 (agriculture / industry / services)	6/44/50	GDP by economic activity (as a percentage of GDP), 2009 (agriculture / industry / services)	9/26/65
COMMODITY EXPORT DEPENDENCE		COMMODITY EXPORT DEPENDENCE	
Commodity exports (in millions of US\$ and as a percentage of merchandise exports), 2009-2010	1,345 (96%)	Commodity exports (in millions of US\$ and as a percentage of merchandise exports), 2009-2010	4,461 (74%)
Commodity exports (as a percentage of GDP), 2009-2010	43	Commodity exports (as a percentage of GDP), 2009-2010	12
Exports by commodity groups (as a percentage of total commodity exports), 2009-2010		Exports by commodity groups (as a percentage of total commodity exports), 2009-2010	
All food items	14	All food items	79
Agricultural raw materials	2	Agricultural raw materials	17
Fuels	4	Fuels	2
Ores, metals, precious stones and non-monetary gold	81	Ores, metals, precious stones and non-monetary gold	2
Three leading commodity exports (as a percentage of commodity exports), 2009-2010	86	Three leading commodity exports (as a percentage of commodity exports), 2009-2010	44
(971) Gold, non-monetary (excluding gold ores and concentrates)	48	(011) Meat of bovine animals, fresh, chilled or frozen	25
(285) Aluminium ores and concentrates (incl. alumina)	30	(042) Rice	10
(03) Fishery products	8	(268) Wool and other animal hair (incl. wool tops)	9
Leading destination markets for commodity exports (as a percentage of commodity exports), 2009-2010	88	Leading destination markets for commodity exports (as a percentage of commodity exports), 2009-2010	61
Canada, EU (27), United States, United Arab Emirates, Norway	38/24/11/9/6	EU (27), Brazil, China, Russian Federation, Venezuela (Bolivarian Republic of)	22/17/13/5/4
Export concentration ratio	(2000) 0.5297 (2010) 0.5017	Export concentration ratio	(2000) 0.1705 (2010) 0.2004
Membership in international commodity bodies	INBAR, ITTO	Membership in international commodity bodies	–
FOOD SECURITY		FOOD SECURITY	
Commodity import value (in millions of US\$ and as a percentage of merchandise import value), 2009-2010	426 (32%)	Commodity import value (in millions of US\$ and as a percentage of merchandise import value), 2009-2010	2,911 (38%)
Net food imports (in millions of US\$), 2010	78	Net food imports (in millions of US\$), 2010	- 2,854
MDG 1.1: Percentage of population below 1US\$ (PPP) per day, 1990/92 and 2007/09	16 - n.a.	MDG 1.1: Percentage of population below 1US\$ (PPP) per day, 1990/92 and 2007/09	0.7 - 0
MDG 1.9: Percentage of the population undernourished, 1991 and 2007	14 - 15	MDG 1.9: Percentage of the population undernourished, 1991 and 2007	5 - 5


VENEZUELA (BOLIVARIAN REPUBLIC OF)
GENERAL INFORMATION

Total area (square kilometres), 2009	912,050
Agricultural area (as a percentage of total area), 2009	23
Population (1,000 inhabitants), 2010	28,980
Labour force (1,000 workers), 2010	13,754
Women in labour force (as a percentage of total labour force), 2010	40
Labour force in agriculture (as a percentage of total labour force), 2010	5
Women in agriculture (as a percentage of labour force in agriculture), 2010	6
Gross Domestic Product (GDP) (in millions of US\$), 2010	389,650
GDP by economic activity (as a percentage of GDP), 2009 (agriculture / industry / services)	4/56/40

COMMODITY EXPORT DEPENDENCE

Commodity exports (in millions of US\$ and as a percentage of merchandise exports), 2009-2010	54,944 (91%)
Commodity exports (as a percentage of GDP), 2009-2010	15
Exports by commodity groups (as a percentage of total commodity exports), 2009-2010	
All food items	1
Agricultural raw materials	–
Fuels	95
Ores, metals, precious stones and non-monetary gold	4
Three leading commodity exports (as a percentage of commodity exports), 2009-2010	95
(333) Petroleum oils, oils from bitumin. materials, crude	70
(334) Petroleum oils or bituminous minerals > 70 % oil	23
(684) Aluminium	2
Leading destination markets for commodity exports (as a percentage of commodity exports), 2009-2010	81
United States, China, EU (27), Singapore, India	54/9/8/5/5
Export concentration ratio	(2000) 0.6054 (2010) 0.6315
Membership in international commodity bodies	INBAR, ICCO, ITTO

FOOD SECURITY

Commodity import value (in millions of US\$ and as a percentage of merchandise import value), 2009-2010	8,413 (22%)
Net food imports (in millions of US\$), 2010	5,396
MDG 1.1: Percentage of population below 1US\$ (PPP) per day, 1990/92 and 2007/09	3 - 4
MDG 1.9: Percentage of the population undernourished, 1991 and 2007	10 - 7